

ANTIFREEZE
BIO DIESEL
DIESEL
FOOD
GASOLINE
GREASE
KEROSENE
OIL
AdBlue®
WATER
WINDSCREEN

DC PUMPS BP 3000 - BP 3000 INLINE

**MADE
IN
ITALY**

IT. Pompe a palette per travaso. Potenti, affidabili ed economiche sono disponibili con motore a corrente continua 12 e 24 Volt.

Grazie alla compattezza queste pompe trovano impiego come primo impianto su macchine movimento terra.

FR. Pompes à palettes pour transvasement. Puissantes, fiables et économiques, elles sont disponibles avec moteur à courant continu 12 et 24 V.

Compactes, ces pompes peuvent être utilisées comme premier équipement sur des engins de terrassement.

DE. Flügelzellen-Umfüllpumpen. Leistungsstark, zuverlässig, wirtschaftlich und mit 12- und 24 Volt Gleichstrommotor.

Dank der kompakten Bauweise lassen sich diese Pumpen als Erstanlage bei Erdbewegungsmaschinen einsetzen.

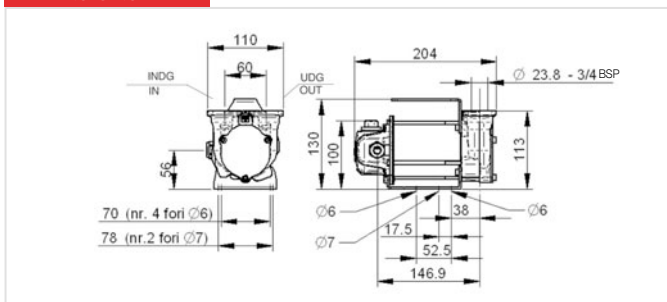
PERFORMANCE

- Pompa a palette con rotore.
- Valvola by pass incorporata nel corpo pompa.
- Ciclo di lavoro 30 min.
- Portata fino a 50 l/min
- Rumorosità minore di 70 dB
- Funzionamento 12 - 24 V DC

- Pompe à palettes avec rotor.
- Soupape by-pass incorporée dans le corps de la pompe.
- Cycle de travail : 30 min
- Débit : jusqu'à 50 l/min
- Bruit : inférieur à 70 dB
- Fonctionnement : 12-24 V cc

- Flügelzellenpumpe mit Rotor.
- Im Pumpenkörper eingebautes Bypass-Ventil.
- Arbeitszyklus 30 Min.
- Durchflussmenge bis 50 l/Min.
- Kleinster Lärmpegel 70 dB
- Stromversorgung 12 - 24 V DC

DIMENSIONS



GUARANTEE



Guaranteed IP55 protection
Prevents water and dust entering the motor.



EMC Test
No interference with power circuits.



Vibration Test
Able to resist high vibrations.

PRODUCTS' RANGE WEIGHT AND PACKAGING

Code	Weight		Packaging		pcs/box
	kg	lbs	mm	inch	
F00342000	3,5	7,9	200x120x140	7,9x4,7x5,5	1
F00347000	3,5	7,9	200x120x140	7,9x4,7x5,5	1
F00357500	3,5	7,9	200x120x140	7,9x4,7x5,5	1
F00358500	3,5	7,9	200x120x140	7,9x4,7x5,5	1



**REGISTERED
DESIGN**

PUMPS

Flow-rate

up to
50 l/min
(up to 13 gpm)



DISPENSERS

PUMPS

METERS

NOZZLE METERS

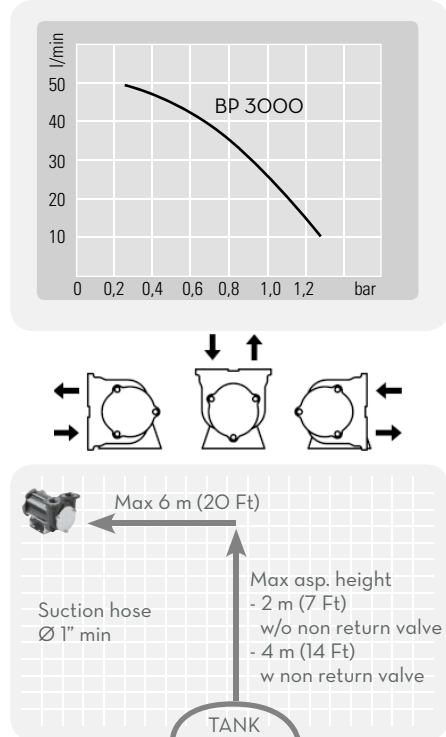
NOZZLE

SPECIAL EQUIPMENTS

FLUID MONITORING

ACCESSORIES

FILTERING



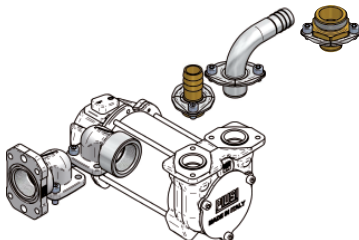
ON REQUEST



- KIT terminal box + 2mt cable + fuse 25A with clamp BP3000 12V - Code F16293000
- KIT terminal box + 4mt cable + fuse 25A with clamp BP3000 12V - Code F16295000
- KIT terminal box + 2mt cable + fuse 15A with clamp BP3000 24V - Code F16294000
- KIT terminal box + 4mt cable + fuse 15A with clamp BP3000 24V - Code F16296000



BP 3000 VERTICAL PORTS ONLY



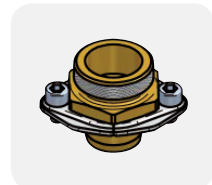
Kit straight hose tail 3/4":
Code F16172000
(No.02 pcs)
1": Code F17124000
(No.02 pcs)



90° hose tail 3/4": Code F16173000
(No.01 pcs)
1": Code F17262000
(No.01 pcs)



Flanged elbow
Code F16178000
(No.01 pcs)
Elbow
Code F16770000
(No.01 pcs)



Flanged adaptor (No.01 pcs)
1" BSP F: F16799000
3/4" BSP F: F17314000
1" BSP M: F17313000

PRODUCTS' RANGE TECHNICAL DATA

Code	Description	Fluids type	Flow-rate		Voltage			rpm	Duty cycle min.	Max working pressure bar.
			l/min	gpm	DC Volt	Power Watt	Amp. max.			
F00342000	BP3000 12V	D	50	13	12	300	24	2900	30	1,5
F00347000	BP3000 24V / 12V	D	50/30	13/6	24/12	310/80	13/6,5	2900/1500	30	1,5
F00357500	BP3000 INLINE 12V	D	50	13	12	300	24	2900	30	1,5
F00358500	BP3000 INLINE 24V / 12V	D	50/30	13/6	24/12	310/80	13/6,5	2900/1500	30	1,5