

ANTIFREEZE
BIO DIESEL
DIESEL
FOOD
GASOLINE
GREASE
KEROSENE
OIL
AdBlue®
WATER
WINDSCREEN

DC PUMPS BIPUMP

**MADE
IN
ITALY**

IT. Pompa a palette per travaso. Pompa di tipo rotativo volumetrico a palette per il travaso di gasolio, caratterizzata da elevata portata. Disponibili nella versione a 12 e 24 Volt.

Caratteristiche tecniche: Pompa del tipo a palette con rotore. Valvola by pass incorporata nel corpo pompa. Ciclo di lavoro: 30 min. Interruttore on/off integrato. Attacchi flangiati da 1".

FR. Pompes à palettes pour transvasement. Pompe de type rotative volumétrique à palettes pour le transvasement du gasoil, caractérisée par un débit élevé. Disponibles dans la version à 12 et 24 Volts.

Caractéristiques techniques: Pompe de type à palettes avec rotor. Soupape by-pass incorporée dans le corps de la pompe. Cycle de travail: 30 min. Interrupteur on/off intégré. Raccords bridés de 1".

DE. Flügelzellen-Umfüllpumpe. Flügelzellenverdrängerpumpe zum Umfüllen von Diesel, gekennzeichnet durch hohe Förderleistung. Erhältlich in der Version 12- und 24-Volt.

Technische Merkmale: Flügelzellenpumpe mit Rotor. Im Pumpenkörper eingebautes Bypass-Ventil. Arbeitszyklus 30 Min. Integrierter Ein-/Ausschalter. Geflanschte 1"-Anschlüsse.

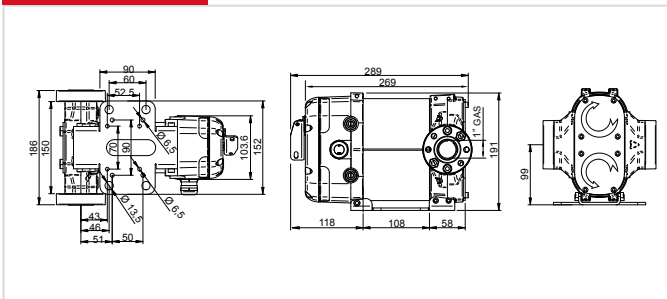
PERFORMANCE

- Portata fino a 85 l/min
- Funzionamento 12 - 24 V DC
- Ciclo di lavoro 30 min.

- Débit : jusqu'à 85 l/min
- Fonctionnement : 12-24 V cc
- Cycle de travail : 30 min

- Durchflussmenge bis 85 l/Min.
- Stromversorgung 12 - 24 V DC
- Arbeitszyklus 30 Min.

DIMENSIONS



GUARANTEE

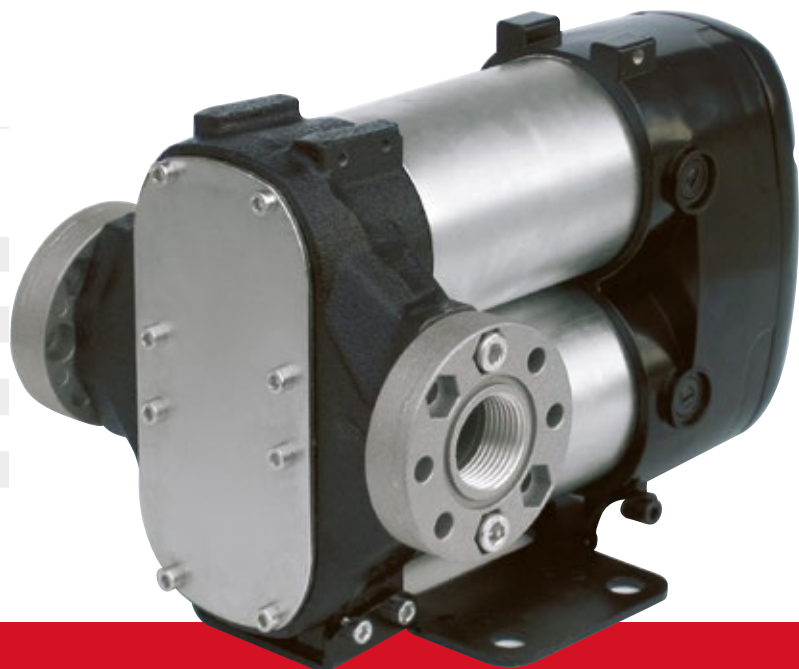
IP 55

IP Protection
Guaranteed

**Guaranteed IP55
protection**
Prevents water and
dust entering the
motor.

PRODUCTS' RANGE WEIGHT AND PACKAGING

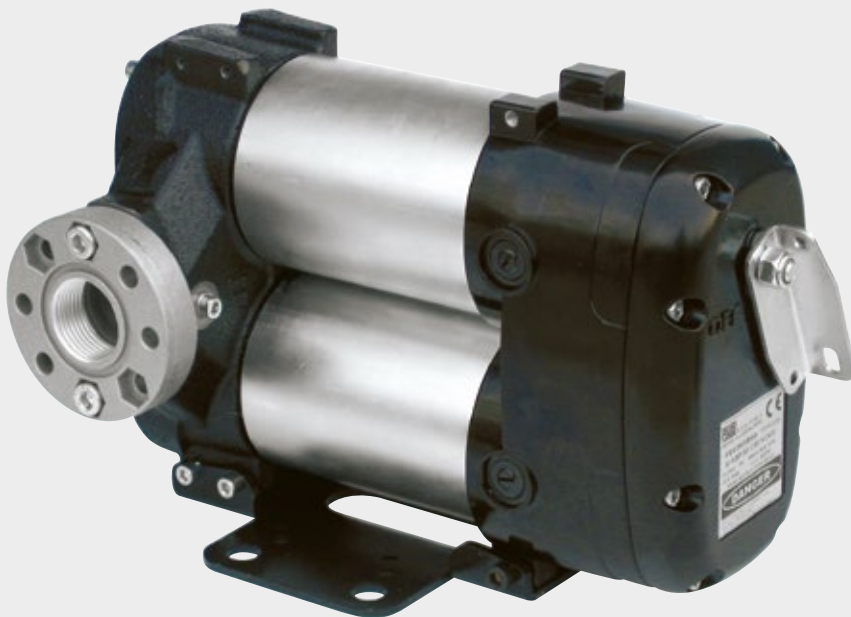
| Code | Weight | | Packaging | | N. Boxes/ Europallet | |
|------------------|--------|------|-------------|-------------|-------------------------|----|
| | kg | lbs | mm | pcs/ box | ✈ | 🚛 |
| F00363A0A | 9,9 | 21,8 | 345x175x255 | 1 | 60 | 72 |
| F00363B0A | 9,9 | 21,8 | 345x175x255 | 1 | 60 | 72 |
| F0036301A | 10,2 | 22,5 | 345x175x255 | 1 | 60 | 72 |
| F0036302A | 10,4 | 22,5 | 345x175x255 | 1 | 60 | 72 |
| F0036303A | 10,2 | 22,5 | 345x175x255 | 1 | 60 | 72 |
| F0036304A | 10,4 | 22,5 | 345x175x255 | 1 | 60 | 72 |
| F0036321A | 8,5 | 18,7 | 345x175x255 | 1 | 60 | 72 |



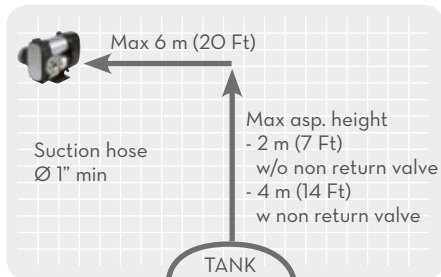
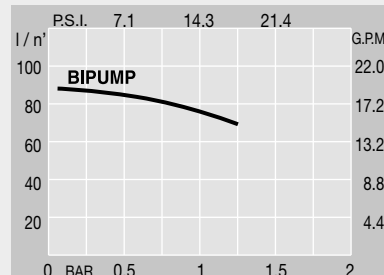
PUMPS

Flow-rate

up to
85 l/min
(up to 22,4 gpm)



Bipump



FEATURES

On/Off switch



Flanged connect.



ON REQUEST

Kit Carry



PRODUCTS' RANGE TECHNICAL DATA

| Code | Description | Fluids type | Flow-rate | | Voltage | | | Duty cycle min. | rpm | Inletw BSP |
|-----------|------------------------------------|-------------|-----------|------|---------|------------|-----------|-----------------|------|------------|
| | | | l/min | gpm | DC Volt | Power Watt | Amp. max. | | | |
| F00363A0A | Bipump 12V with on/off switch | D | 85 | 22,4 | 12 | 500 | 42 | 30 | 2000 | 1" |
| F00363B0A | Bipump 24V with on/off switch | D | 85 | 22,4 | 24 | 500 | 21 | 30 | 2000 | 1" |
| F0036301A | Bipump 12V with cable 2 m | D | 85 | 22,4 | 12 | 500 | 42 | 30 | 2000 | 1" |
| F0036302A | Bipump 12V with cable 4 m | D | 85 | 22,4 | 12 | 500 | 42 | 30 | 2000 | 1" |
| F0036303A | Bipump 24V with cable 2 m | D | 85 | 22,4 | 24 | 500 | 21 | 30 | 2000 | 1" |
| F0036304A | Bipump 24V with cable 4 m | D | 85 | 22,4 | 24 | 500 | 21 | 30 | 2000 | 1" |
| F0036321A | Bipump 12/24 without on/off switch | D | 85 | 22,4 | 12/24 | 500/500 | 42/21 | 30/30 | 2000 | 1" |
| R14334000 | Kit cable 2 m | | | | | | | | | |
| R14335000 | Kit cable 4 m | | | | | | | | | |
| F14200000 | Kit handle | | | | | | | | | |